



Grade II–III certified  
lightweight panels  
and doors for flexible  
security enclosure  
construction



# ModuleGuard

BURGLARY-RESISTANT PROTECTION

## Key Features

- ModuleGuard security enclosures are certified Grade II–III by ECB•S in accordance with the EN 1143-1 certification for burglary resistance.
- The rooms also offer approved protection against certain firearms.
- The security enclosures are constructed using modular, lightweight panels.
- The light weight reduces transportation costs, eases installation and allows for placement higher up in buildings where floor loads are limited.
- The modular construction means assembly, disassembly and expansion of a room is both quick and easy.
- The security enclosures can be built into the existing structure of a building and customised to meet the required dimensions.
- Possible application are: reinforced protection for cash-counting rooms, archives, storerooms (for weapons), ATMs, etc.
- A series of high-security locking options is available.
- The exterior of the enclosure can be painted or finished with decorative panels. Pre-painted or galvanised version available as an option.
- 11mm diameter cable holes can be positioned to suit providing they meet certification requirements.



**Chubb**safes

*Trusted the world over.*

## Product Specifications

### ModuleGuard Doors, Dimensions

Door height (clear opening in mm)	2055	2055	2055	2055	2055	2055
Door width (clear opening in mm)	750	900	1050	1200	1350	1500
Door thickness (mm)	185	185	185	185	185	185
Net door weight (kg)	500	600	700	800	900	1000

### ModuleGuard Panels, Dimensions (mm)

Width	300	600	750
Thickness	75	75	75
Max Panel Length*	3945	3945	3945
Net Panel Weight (kg)	123/128	246/256	308/320
Floor load	Floor load depends on the size of the enclosure.		

\* Without support structure

## Minimum Room Measurements

To be certified, the room must be six-sided and fulfil minimum dimensions as given to the right.

Minimum room measurements (mm)		External	Internal
Height		2290	2140
Width		2445	2295
Depth		1545	1395
Weight (kg)	Grade II	3100	
	Grade III	3200	

The specifications given are the minimum size for a certified ModuleGuard enclosure. They are based on a Grade III enclosure and a door with a clear opening width of 900mm. Larger sizes can be made to order. Please note, for extra large dimensions, an additional frame structure may be required for support.

## Burglary Testing

ModuleGuard has been approved by ECB•S in accordance with the European standard, EN 1143-1, for burglary protection in Grades II and III.

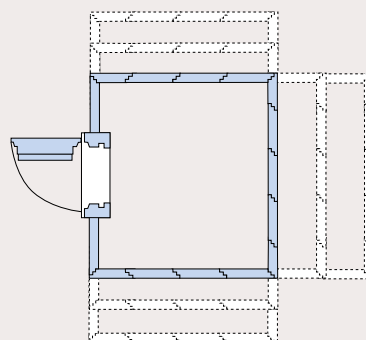
A range of attack tools were used to test ModuleGuard's level of resistance, from basic tools, such as drills and sledgehammers, to more sophisticated thermal and electrical equipment, like the oxyacetylene torch.

ModuleGuard has also been granted level CR4 according to the EN 1627-30 standard. It has also undergone certified ballistics test and has been certified to level FB4 in accordance with EN 1522.

## Locks

SafeLock series, LG 39E, LG 1947, Kaba Mauer 70079.

Authorised dealer:



**Chubbsafes**  
Trusted the world over.

[www.chubbsafes.com](http://www.chubbsafes.com)

'Chubb' is owned by Chubb plc and is a registered trademark used under license